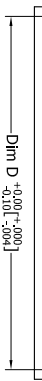
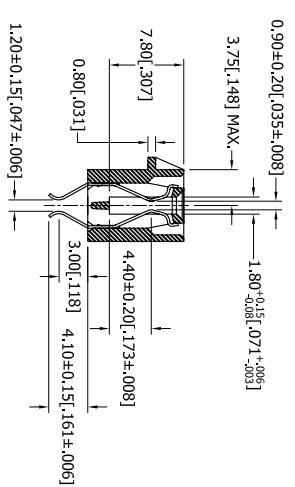
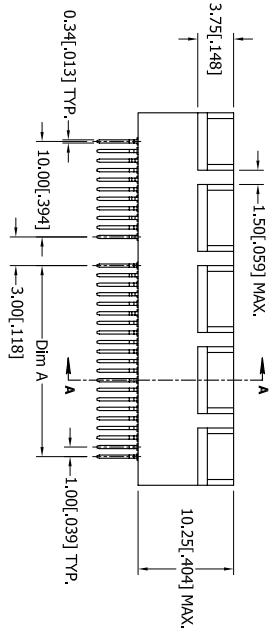
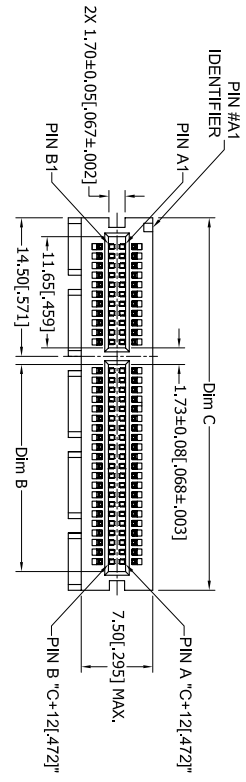


REV.		ECO. NO	DESCRIPTION	DATE	BY
A	1595		INITIAL RELEASE	11/31/2007	VJ
B	1707		UPDATE P/N CODING CHART, PLATING	05/30/08	ASK



PART NUMBER	POSITIONS/ CONTACTS	A		B		C		D		E		G		SPACES 'H'	PIN 'K'	
		MM	INCH	MM	INCH	MM	INCH	MM	INCH	MM	INCH	MM	INCH			MM
N E18DHRN-T94	18/36	6	0.236	7.65	0.301	25	0.984	23	0.906	9.5	0.374	8.15	0.321	6	0.236	A1, B17
N E32DHRN-T94	32/64	20	0.787	21.65	0.852	39	1.535	37	1.457	23.5	0.925	22.15	0.872	20	0.787	A1, B17, B31
N E49DHRN-T94	49/98	37	1.457	38.65	1.522	56	2.204	54	2.126	40.5	1.594	39.15	1.541	37	1.457	A1, B17, B31, B48
N E82DHRN-T94	82/164	70	2.756	71.65	2.821	89	3.504	87	3.425	73.5	2.893	72.15	2.841	70	2.756	A1, B17, B31, B48, B81

UNLESS OTHERWISE SPECIFIED:
 DIMENSIONS ARE IN INCHES(MM)
 DIMENSIONS ARE ±.30
 ANGULAR: ±.50
 XX±.02 (.508)
 XXX±.005 (.127)
 XXXX±.001 (.0254)
 SURFACE FINISH: G Ra
 REMOVE ALL BURRS AND SHARP EDGES .010 MAX
 INTERPRET DIMENSIONS AND GEOMETRIC TOLERANCING PER: ANSI Y14.5M-1994

NOTES:
 1. INSULATOR MATERIAL: HIGH TEMPERATURE THERMOPLASTIC.
 2. CONTACT MATERIAL: SEE PART NUMBER CODING.
 3. PLATING: SEE PART NUMBER CODING.
 4. OPERATING TEMPERATURE: -10°C ~ 85°C.
 5. PROCESSING TEMP: 260°C FOR 10 SECONDS MAX.
 6. UL FLAMMABILITY RATING: 94V-0
 7. VOLTAGE RATING: 50 VDC MINIMUM AT SEA LEVEL.
 8. CURRENT RATING: 1.1 AMP PER CONTACT.
 9. VOLTAGE DROP: 44 MILLI VOLT AT RATED CURRENT.
 10. INSULATION RESISTANCE: 1000 MEGA OHMS.
 11. CONNECTOR IDENTIFICATION: THE PART SHALL BE MARKED WITH A PART NUMBER AND BARCODE.
 12. BOARD THICKNESS ACCOMMODATED: 1.57±0.20(.062±.008).
 13. BOARD INSERTION FORCE: 1.15N (117.3g) MAX PER CONTACT PAIR WHEN USING A 1.57(.062) TEST BLADE.
 14. BOARD WITHDRAWAL FORCE: 0.15N (15.31g) MINIMUM PER CONTACT PAIR USING 1.57(.062) PCB
 15. MODIFICATION: SEE PART NUMBER CODING.
 16. NO THE BAR PERMITTED FROM CARD EDGE TO LEADING EDGE OF PAD FOR PINS 'A1' AND 'K'.
 17. CHAMFER EDGES MUST BE FREE OF CUTTING BURR.

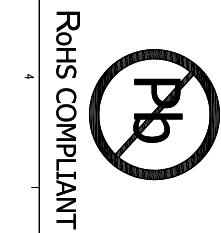
THE INFORMATION HEREIN CONTAINS TRADE SECRETS AND/OR PROPRIETARY INFORMATION OF SULLINS ELECTRONICS. IT IS TO BE KEPT CONFIDENTIAL AND NOT DISCLOSED TO OTHERS FOR ANY REASON, EXCEPT AS SPECIFIED IN WRITING BY SULLINS ELECTRONICS. REMOVE ALL BURRS AND SHARP EDGES .010 MAX

SCALE: 1:1

SIZE DWG. NO. 11044

DESCRIPTION STRADDLE MOUNT, NO PEGS
 PART NUMBER N_E_DHRN - T94
 DRAWN 11/31/07 V. JARA
 DATE 11/31/07
 NAME V. JARA
 THE INFORMATION HEREIN CONTAINS TRADE SECRETS AND/OR PROPRIETARY INFORMATION OF SULLINS ELECTRONICS. IT IS TO BE KEPT CONFIDENTIAL AND NOT DISCLOSED TO OTHERS FOR ANY REASON, EXCEPT AS SPECIFIED IN WRITING BY SULLINS ELECTRONICS. REMOVE ALL BURRS AND SHARP EDGES .010 MAX

REVISIONS
 DATE 11/31/2007
 BY VJ
 INITIAL RELEASE
 DATE 05/30/08
 BY ASK
 UPDATE P/N CODING CHART, PLATING



SULLINS
 CONNECTOR SOLUTIONS

DESCRIPTION STRADDLE MOUNT, NO PEGS
 PART NUMBER N_E_DHRN - T94
 DRAWN 11/31/07 V. JARA
 DATE 11/31/07
 NAME V. JARA
 THE INFORMATION HEREIN CONTAINS TRADE SECRETS AND/OR PROPRIETARY INFORMATION OF SULLINS ELECTRONICS. IT IS TO BE KEPT CONFIDENTIAL AND NOT DISCLOSED TO OTHERS FOR ANY REASON, EXCEPT AS SPECIFIED IN WRITING BY SULLINS ELECTRONICS. REMOVE ALL BURRS AND SHARP EDGES .010 MAX

SCALE: 1:1

SIZE DWG. NO. 11044

DESCRIPTION STRADDLE MOUNT, NO PEGS
 PART NUMBER N_E_DHRN - T94
 DRAWN 11/31/07 V. JARA
 DATE 11/31/07
 NAME V. JARA
 THE INFORMATION HEREIN CONTAINS TRADE SECRETS AND/OR PROPRIETARY INFORMATION OF SULLINS ELECTRONICS. IT IS TO BE KEPT CONFIDENTIAL AND NOT DISCLOSED TO OTHERS FOR ANY REASON, EXCEPT AS SPECIFIED IN WRITING BY SULLINS ELECTRONICS. REMOVE ALL BURRS AND SHARP EDGES .010 MAX

REVISIONS
 DATE 11/31/2007
 BY VJ
 INITIAL RELEASE
 DATE 05/30/08
 BY ASK
 UPDATE P/N CODING CHART, PLATING

